

Lightweight panels in *natural stone*

The combination of thin natural stone and lightweight backing aerotechnology material make natural stone extremely light and thin in a remarkably large format.

The lightest, thinnest, and strongest large format natural stone, granite and marble panels in the world.

MARBLEEDGE
ADVANCED SURFACES

MARBLEEDGE STONE PANELS



- ultralite 
- durapanel 
- duratile 
- clearpanel 
- stonefiber 



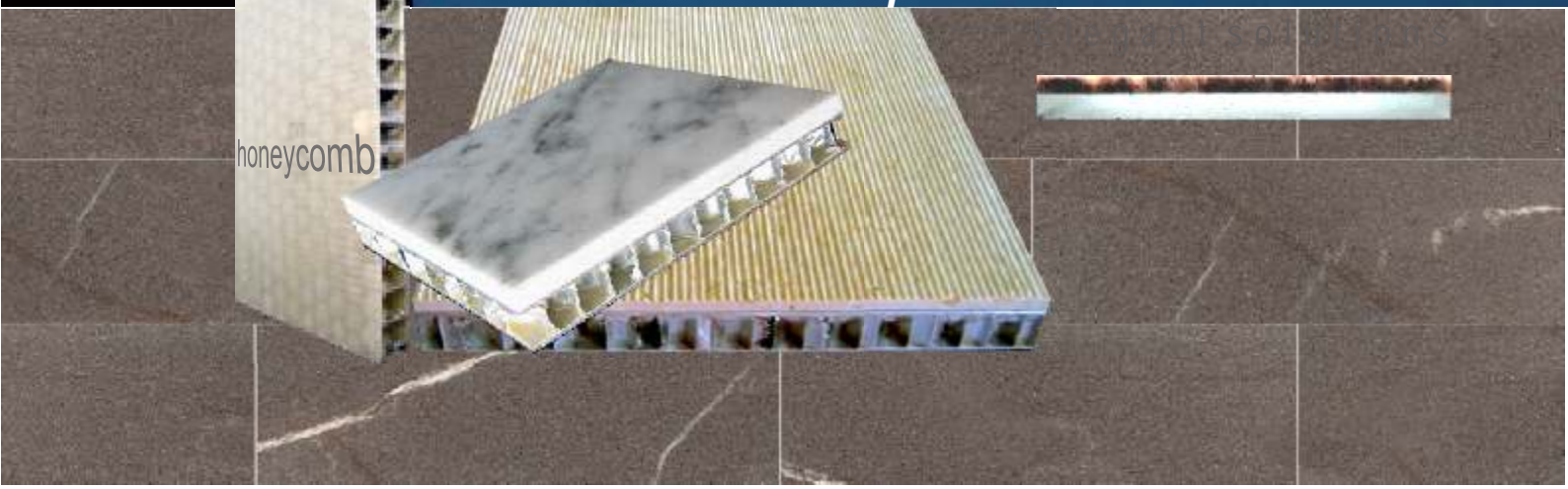
Aerospace aluminum honeycomb technology

Marbledge is the global choice for commercial stone wall panel and cladding applications by discriminating architects owners and general contractors. Marbledge is used extensively for exterior, interior, renovation elevator, aircraft, cruise ship and specialty applications.

u n l i m i t e d p o s s i b i l i t i e s



honeycomb



MARBLEGE supplies extremely thin yet strong large-sized lightweight panels of natural stone that can even float on water thus offering multiple possibilities.



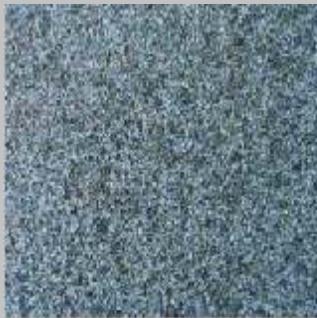
flamed



hammered



honed



honed



engrave

MAX. GROSS WGT.

EDGE



WWW

marbledge.com



Applications

Hotels / Restaurants / Bars / Casinos

Atrium lobby floor design enabling quick and clean installation.

Exhibitions / Trade Fair

Easy installation and dismantling of large format. Tight time schedule can be kept with precisely prefabricated modules.

Shops / Display Stalls

Fast and easy installation and dismantling of linings or dividers for limited utilization period.

MARBLEGE can be installed in a very short time and equally reinstalled in a different place. Thus, savings are made by less lifting equipment and personnel.

Precise mirroring of large formats are barely possible with conventional natural stone.

Bathroom upgrade

Extremely durable in areas exposed to water or splash. Installed within a few hours as an upgraded lining. It can also be bonded to an existing wall lining.

Entries receptions

Low risk of breakage offers innumerable applications for furniture, inlay medallions, mosaics or dividers.

Cruise-liners / Yachts / Mobile homes / Trains / Airplanes / Lifts / Banks / Office / Buildings

MARBLEGE can be lined on floors, walls, ceilings, doors, operating panels, portals and lift entries.



Marbledge panels can be used in various applications especially where dimensional stone is too heavy to be economically used possibilities are only limited by imagination

MARBLEEDGE

ADVANCED SURFACES



 durapanel

3 mm genuine natural stone bond to 15 mm aluminium honeycomb panel

overall thickness: 10-15-18-25 mm \pm 0.5 mm
weight: approx. 15 kg/m²
max. dimensions: 1200 x 2400 mm

application: Interior/exterior floors, walls and fixtures

the lightweight stone panels comprises two pre-coated aluminium skins bonded to an aluminium honeycomb shaped core, creating exceptional rigidity and strength, while requiring a minimal sub-structure



 ultralite

3 mm genuine natural stone bonded to 3 mm aluminium composite panel

overall thickness: 6 mm \pm 0.5 mm
weight: approx. 14 kg/m²
max. dimensions: 800 x 2400 mm

application: Interior/exterior floors, walls and fixtures



 duratile

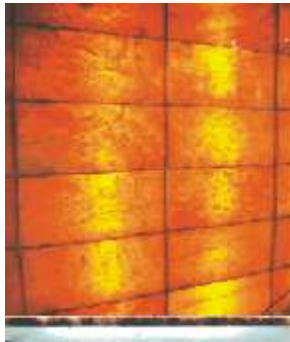
3 mm genuine natural stone bonded to 7-12-18 mm ceramic/granite tile


overall thickness: 10-20mm \pm 0.1 mm
weight: approx. 24 kg/m²
max. dimensions: 800 x 800 mm

Application: Interior/exterior floors and walls

MARBLEEDGE advantages

- * Large format panels
- * Versatile fastening options
- * Clean and easy for dry wall technology
- * Easy installation due to its low weight
- * Fast installation due to its large format
- * Low construction/renovation costs
- * Safe from breakage unlike solid stone



 clearpanel

3 mm genuine natural stone bond to 6-10-19 mm clear glass

overall thickness: 12-18 mm ± 0.5 mm
 weight: approx. 15 kg/m²
 max. dimensions: 1200 x 2400 mm

application: interior floors, walls and fixtures



 stonefiber

12 mm genuine natural stone reinforced by double matting isotropically woven fiber resin.

overall thickness: 6-12-16-20 mm ± 0.5 mm
 weight: approx. 28 kg/m²
 max. dimensions: 800 x 800 mm

application: interior / exterior floors and walls



abrasive waterjet cutting

Waterjet technology - a computerized cold cutting technology that can cut most materials into any two dimensional shape. Marble, granite, porcelain, ceramic, vinyl, and all metals are excellent materials for waterjet process. Its cutting is a clear cold process that does not heat, harden, or distort metals. It cleanly and efficiently cuts stone, ceramics, and porcelains.

The customer submits a drawing, blueprint, or electronic file. Creative Edge Mastershop then scans, digitizes, or loads the file or drawing with AutoCad.



Waterjet is an important breakthrough in fabrication methods for both industrial and architectural applications. Depending on the material, thickness and intricacy of the cut, the savings compared to traditional cutting methods can be substantial. Its cutting has significant advantages over competing cutting methods, such as routers, plasma torch, laser cutting and electrical discharge machining (EDM).

Waterjet allows for complex and difficult shapes such as inside corners, notches, architectural and artistic shapes, to be cut with equal ease and with a high level of accuracy and precision. As this is a CAD driven process, it also offers the capability of repeatability, not available with most other cutting methods. It can be used for cutting composites and plastics that cannot tolerate heat, mechanical damage or delimitation. There are no molding or tooling costs associated with waterjet.

complex cutting without breakage due to reinforced composite backing

architectural borders medallions complicated patterns signage engraving

Processing & Installation

MARBLEDGE panels can be field attached in several different ways depending on the application and back up framing. Below are instructions for the most commonly used attachment systems.

Interlocking Channel System is a commonly used attachment system. It is extremely versatile, working well with a variety of back up systems on both exterior and interior applications. This very simple attachment system offers extremely fast construction speed greatly reducing field labor.



Joint Interlocking Channel System is a variation of our interlocking channel system for use on smaller panels or projects with a broken bond joint layout. It eliminates the need for much of the field channel normally required by incorporating it into the panel below.

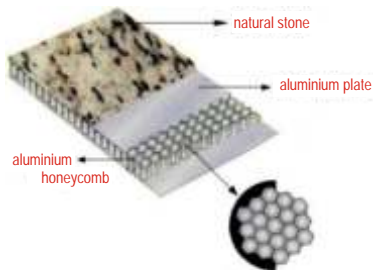
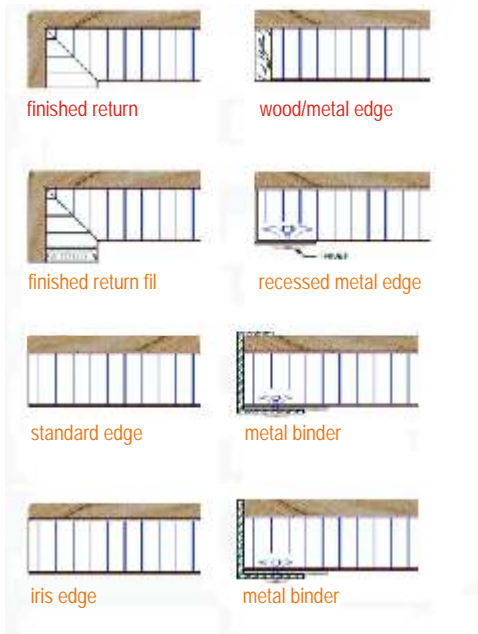


Anchor Plate Attachment System is one of the simplest system attachment as it is made by screwing through the joints through the slotted hole in the anchor plate and into the framing behind. This system requires that framing be located behind each panel joint and the minimum joint size is 10 mm as all attachments are made through the joints.



Adhesive Attachment on many interior applications, the most economical way to attach Marbledge panels is to simply adhere them directly to the drywall, steel stud framing, or existing backup. Installation is very quick and simple, greatly reducing on-site labor costs.





Process and Installation Advantage

Several methods of attachment are possible like the bonding techniques and suspension systems that are not common for the conventional marble.

The process is clean and easy for dry wall technology, and safe from breakage.

Dismantling / Re-installing

It can be dismantled within minutes for later modifications becomes necessary for these elements, and re-installed later in the same/different place.

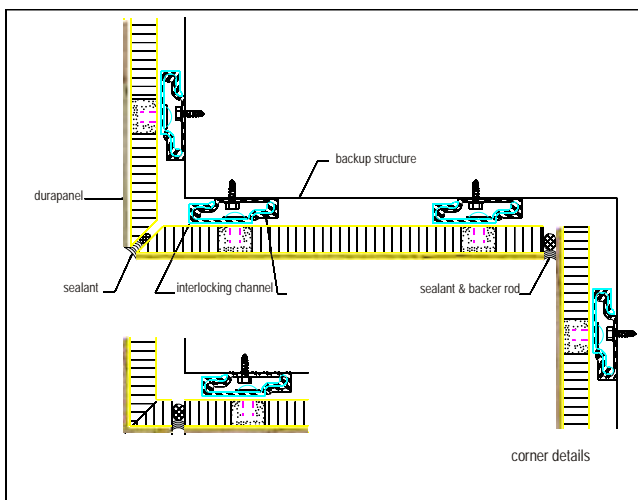
Clean, Fast and Easy Process

By commonly available builder's circular saw, an angle grinder using dry or wet cutting, it can be processed easily, rapidly and cleanly.

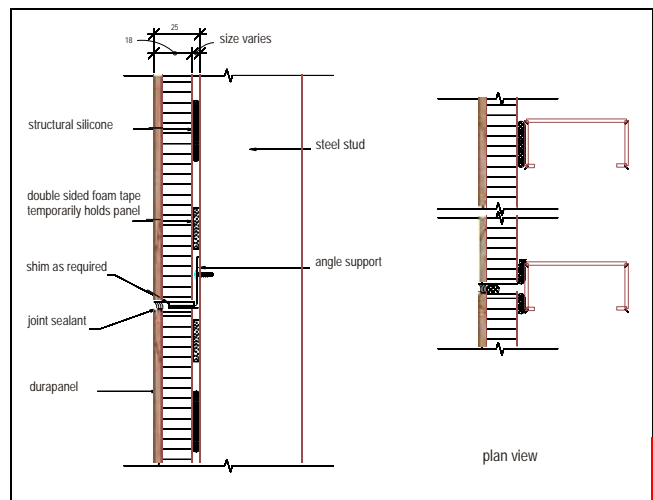
Large individual segments of pre-fabricated flooring, wall or furniture components can be easily transported and fitted due to its lightweight.

Quick and easy assembly for renovations, eg. stair components, shops, office bathrooms, kitchens.

It can be laid on top of existing surfaces usually possible without the dismantling of old linings or floors.



interlocking channel



silicone attachment

D
G
E



alicante chino



nero marquina

L
E
B



classic brown

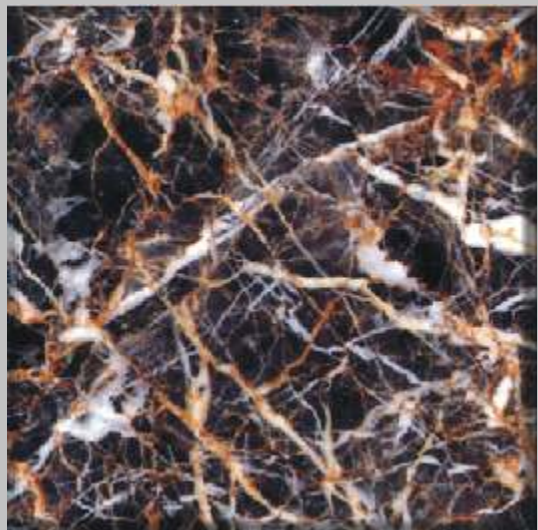


gold yellow

M
A
R



tree black



roso portoro



chocolate



onyx mahogany



yellow onyx



rain forest brown



arabescato corchia



hang grey

D G E

B L E

M A R

SANDSTONE



white sandstone



wave sandstone



wood sandstone



yellow sandstone

TRAVERTINE



white travertine



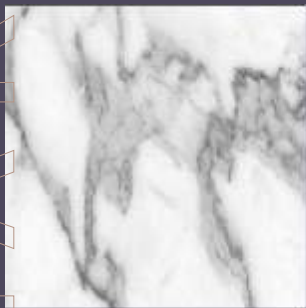
grey travertine



beige travertine



red travertine



statuario



rosso alicante



bianco carrara

more stone colors are available in nearly unlimited choices of natural marble, granite and sandstone from quarries throughout the world. We have several options for finish including polished, honed, sandblasted



rosso lepanto



sunset red



moca crema



perlino cream



ocre gris



crema marfil



norweige rose



nestle lightgrey



gold antique

MARBLE

MARRBLE



white grain



G640



leopard skin



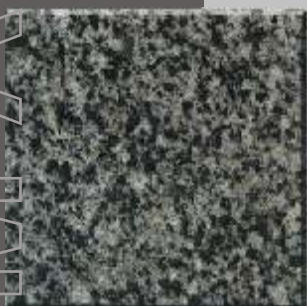
G648



jet mist



iceland blue



gris nero



pebble blue



tan brown



giallo fiorito



african red



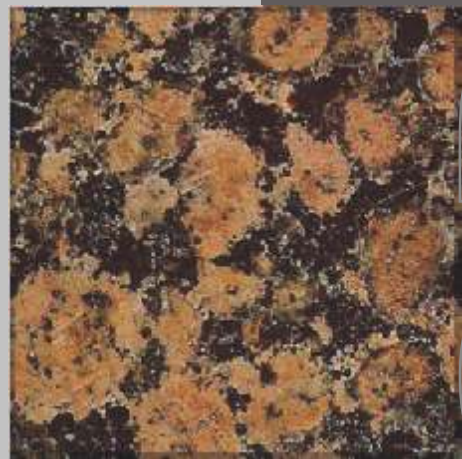
rojo gris



china butterfly green



crystal white



baltic brown

E
T
Z
A
R
G



MARBL